



Motion Studio
What's new
Version 2.16.02

Table of Contents

1. OVERVIEW.....	3
2. WHAT'S NEW.....	4
2.1. XS-RT Remote Control (XS-Mini camera remote communication).....	4
2.2. Auto-exposure and auto-iris XSM support.....	6
2.3. XSM/XSS camera reboot.....	7
2.4. Miscellaneous.....	8

Copyright © Integrated Design Tools, Inc.

The information in this manual is for information purposes only and is subject to change without notice. Integrated Design Tools, Inc. makes no warranty of any kind with regards to the information contained in this manual, including but not limited to implied warranties of merchantability and fitness for a particular purpose. Integrated Design Tools, Inc. shall not be liable for errors contained herein nor for incidental or consequential damages from the furnishing of this information. No part of this manual may be copied, reproduced, recorded, transmitted or translated without the express written permission of Integrated Design Tools, Inc.

1. Overview

This document only lists a short summary of additions, improvements and changes in the GUI between Motion Studio versions.

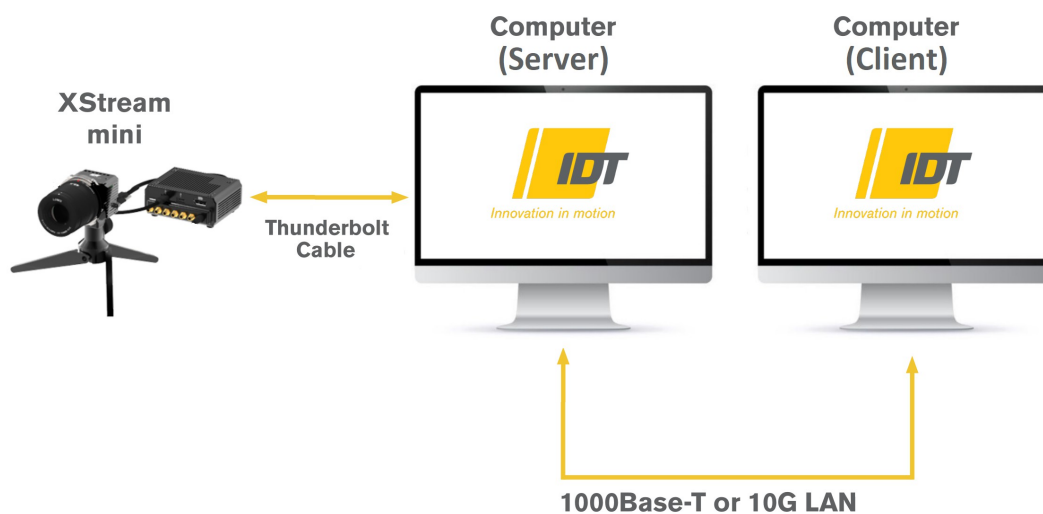
2. What's new

2.1. XS-RT Remote Control (XS-Mini camera remote communication)

XS-RT Remote Control allows the user to control an XS-Mini or XS-Stick camera through the local network. To do so, you need two computers.

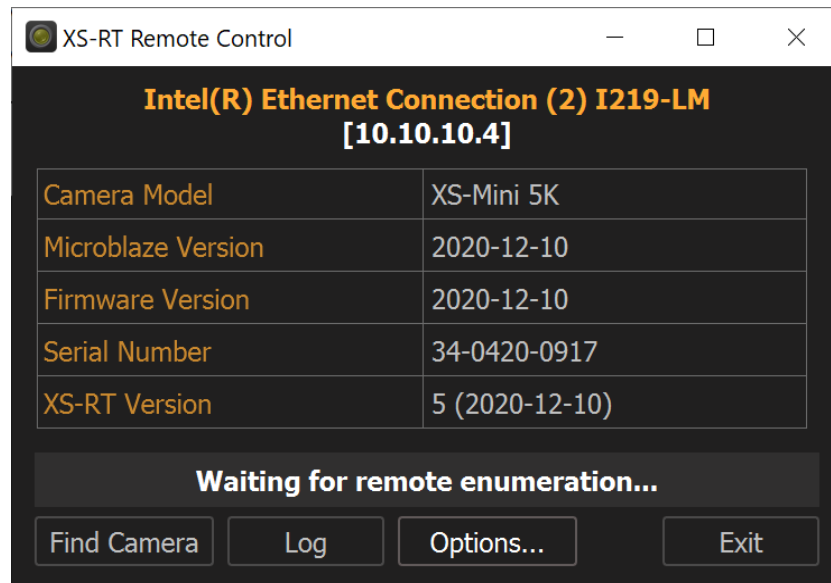
Computer 1 (server): the camera is connected via Thunderbolt or PCIe board. This computer is also connected to a local area network (1 or 10 Gbps). XS-RT Remote control must be installed and executed on this computer.

Computer 2 (client): this computer is connected to the same Local area network (1 or 10 Gbps) of computer 1. Motion Studio (client software) must be installed and executed on this computer.



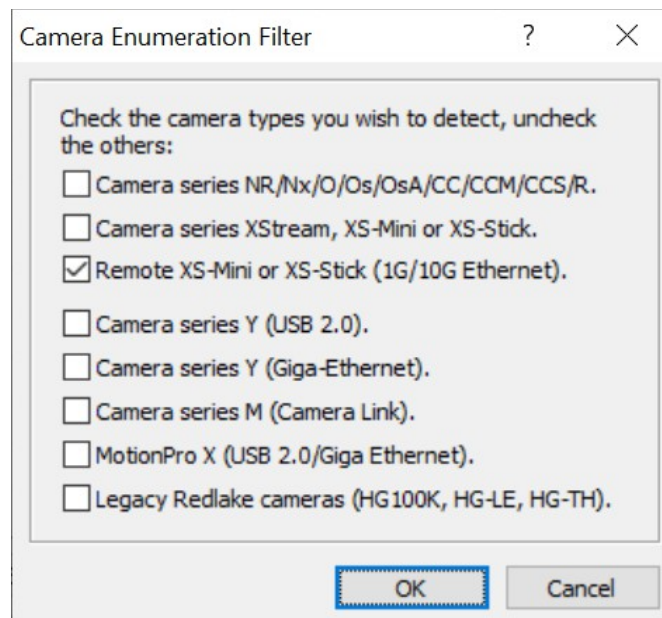
XS-RT Remote control can be downloaded from "idtvision.com" website.

Once the program is started, the window below appears.



If a camera is detected, mode, serial number and firmware versions are listed and the monitor is ready to start the communication.

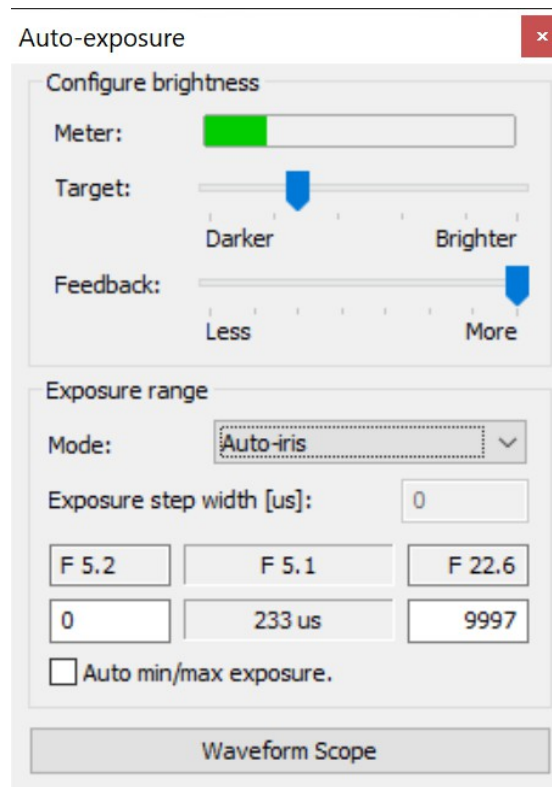
On Motion Studio side, select "Remote XsS-Mini..." filter in order to enumerate and open remote XS-Mini cameras.



2.2. Auto-exposure and auto-iris XSM support

XS-Mini and XS-Stick support for Auto-exposure and Auto-iris has been added to Motion Studio.

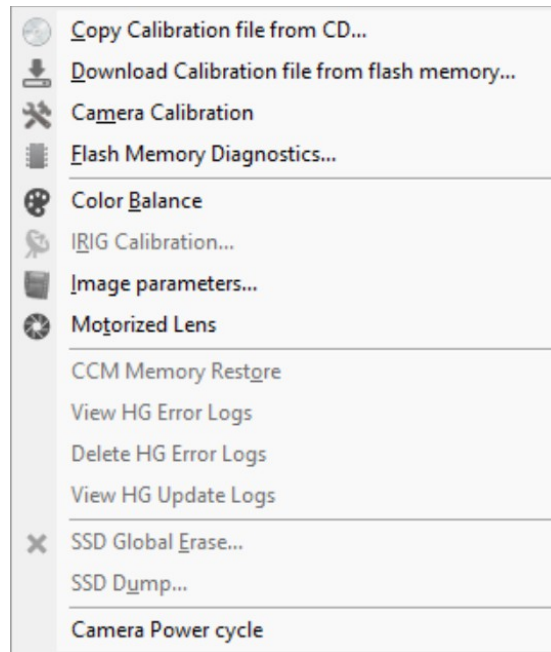
Auto-iris can be selected from “Mode” option and it works only if a motorized lens is installed on the camera. Instead of changing camera exposure, auto-iris open and closes lens aperture.



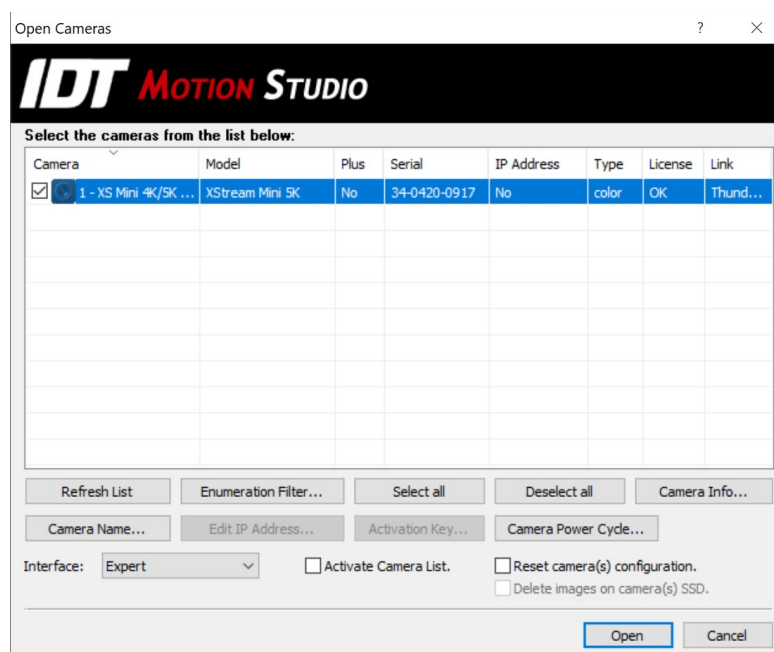
Auto min/max exposure: if this option is selected, exposure range is automatically set to the maximum allowed by current frame rate.

2.3. XSM/XSS camera reboot

In Camera menu, advanced sub menu a new item has been added: “Camera power cycle”. If this item is selected, the camera is powered off for about 2 seconds, then restarted. Motion Studio should be restarted after this operation.



XSM/XSS cameras can also be rebooted from the enumeration dialog box (see below).



2.4. Miscellaneous

- Fixed management of ROI in XSM-3520.
- Implemented pulse high and pulse low sync in mode in CC-Stick.
- Fixed support for hardware trigger in XS-Mini and Stick.
- Do not enable "Jump on next segment" option if camera is XSM.
- Enable XS-RT render on raw files.
- Correct calculation of optimal DDR size for XSM.
- Sync out is off if XSM camera is not in live or record mode.
- Restored sync in delay configuration in PIV/DIC dialog box.
- Master/Slave mode: avoid "recording post-trigger" message on master camera when start recording after live.
- Added XSM camera power cycle option (camera/advanced menu). Enable trigger and sync out configuration. Enable read of external frame rate.
- Added PIV extra gain on XSM-1540, HD and 3520 models (requires camera re-calibration). Fixed PIV/DIC timing generation in Motion Studio.
- Fixed sensor gains on XS-Mini and Stick.
- PTP time stamp in CC-Stick does not match and it disappears in raw files when TNK is enabled. Fixed.
- Restored CFA threshold and old "debayer" algorithm for Y-series and N-series cameras raw files.
- Added support for MFT mount on Os cameras with old firmware.
- Fixed read of image with TNK from CC-Stick SD-Card. Fixed download of RAW file from POV SD-Card.